

Meet and Greet September 2020

Year 3P

Ms Axon and Mrs Clifton



Park House  
English School



Park House  
English School

## Blended Learning

Park House is offering a blended learning approach – this means the children attend face to face days -1 in every three days, and the other days they complete work online.

This is always subject to change. We want the children in school face to face as much as many of you do but we want to keep everyone safe and we have to stick to ministry guidelines.

You will have seen we can now offer only online, if parents wish to do so you need to refer to the email sent by Mr Smith- we would always still advocate for your children to attend face to face as this is always the best approach to teaching.



Park House  
English School

## Blended Learning

Children in Year 3 are given tasks to do at home that link to the face to face sessions in class. The work for both on-line days should be completed by each child **independently** as we need to understand where there are knowledge gaps.

If the maths online learning at home is based on 'shape' then the work studied face to face is also shape for that cycle.



Park House  
English School



Park House  
English School

## Completion and Submission of work

Online work is assigned by 8pm the night before day 1. The deadline for completion is 7pm on day 3. All work will be marked by midnight the following day.

Qatar History is weekly added on a Sunday and should be completed by Tuesday evening. It will be marked by Thursday.

The children should try to complete as much of the work as they can. If they cannot then leave it. **The rule of thumb would be what ever they have completed after 45 minutes of sustained activity will be enough.** In class this is what we would set and if they have not completed it, we would use this as a guide for planning our next lessons.

## Marking and feedback

Children will receive feedback on most of their online work. This may be a simple acknowledgement of the work being completed and sometimes more detailed feedback requiring your child to go back and review. The teacher will decide what is the best way of marking a piece of work based on their knowledge of your child as well as what the work will be used for in the future.

Our school follows English National Curriculum and EYFS curriculum, which is taught throughout the school. We study the subjects below:

- Maths
- English
- IPC
- Music
- IT
- PE
- Languages- Arabic/Spanish/French
- Islamic studies
- Qatar History



Park House  
English School

During face to face pupils will receive:

- Maths
- English
- IPC
- Music
- IT
- PE- PSHE/light table workout (Yoga etc)



Park House  
English School





Park House  
English School

Topics being covered this term are –

- Brainwave
- Different Places, Similar Live
- Feel the Force
- Inventions

Reading will be through Epic at home and teachers will use Oxford Reading Tree to continually assess in school.

Parents can support by communicating any positive feedback with teachers. Please address any concerns directly to the teacher.

## Face to face days

7.40 – Go straight to class  
- registration

8.00 – Formal teaching begins

8.50 – Break/snack time

10.55 – Break/snack time

1.50 – Children taken to playground- collected from class

Pick up at 1:50 **must** be prompt



Park House  
English School

During online pupils will receive:

- Maths
- English
- IPC
- Languages- LIVE lesson
- Islamic - LIVE lesson
- Qatar History
- **Music**- simple follow up activity no need to hand in assignments.
- **PE**- simple follow up activity no need to hand in assignments unless you have chosen purely online learning.



Park House  
English School



Park House  
English School

## Use of TEAMS

- Children should submit all learning through TEAMS.
- Children should not log onto any LIVE sessions before the start of the given time.
- Children should not be communicating with each other socially via TEAMS.
- Remind children of the agreement signed at the beginning of the year for use of TEAMS.

If children are only doing online learning they follow group C and on the 3<sup>rd</sup> day they attend LIVE sessions.

For children participating in solely on-line learning they will be invited to 3 live sessions on the third day of the cycle. Their assignments and live session invites will be posted on a separate TEAMS group that they will be added to once the teacher receives confirmation that the child will not be attending school.



Park House  
English School

# Assessments

We are always assessing the children through AfL too.

Key Stage	Year	End of year assessments	Age
EYFS	Nursery	Internal school moderation, Baseline testing	3 - 4
	Reception		4 - 5
KS1	Year 1		Internal school assessments, GL Assessments (Maths and English)
	Year 2	6 - 7	
KS2	Year 3	7 - 8	
	Year 4	8 - 9	
	Year 5	9 - 10	
	Year 6	10 - 11	



Park House  
English School

# Reporting

Three reports per year (December/March/June)

*Meet the Teacher evening (September)*

Two parent evenings (October/January)



Park House  
English School

# Reminders

Please ensure that your child has two drinks – carried in a non-breakable container. Glass bottles and cans are not suitable. Sensible food should be provided – no chocolate or sweets. We suggest a sandwich and a piece of fruit. All lunch boxes should be clearly marked.

**We have a NO NUT policy at school so please ensure all items are nut free including cereal bars, this also includes Nutella.**



Park House  
English School



# Reminders

No telephones, ipads, iwatches  
or other electronic items



Park House  
English School

# Communication

First point of contact is the class teacher through email:

[fred.jones@parkhouseschool.com](mailto:fred.jones@parkhouseschool.com)

[info@parkhouseschool.com](mailto:info@parkhouseschool.com)

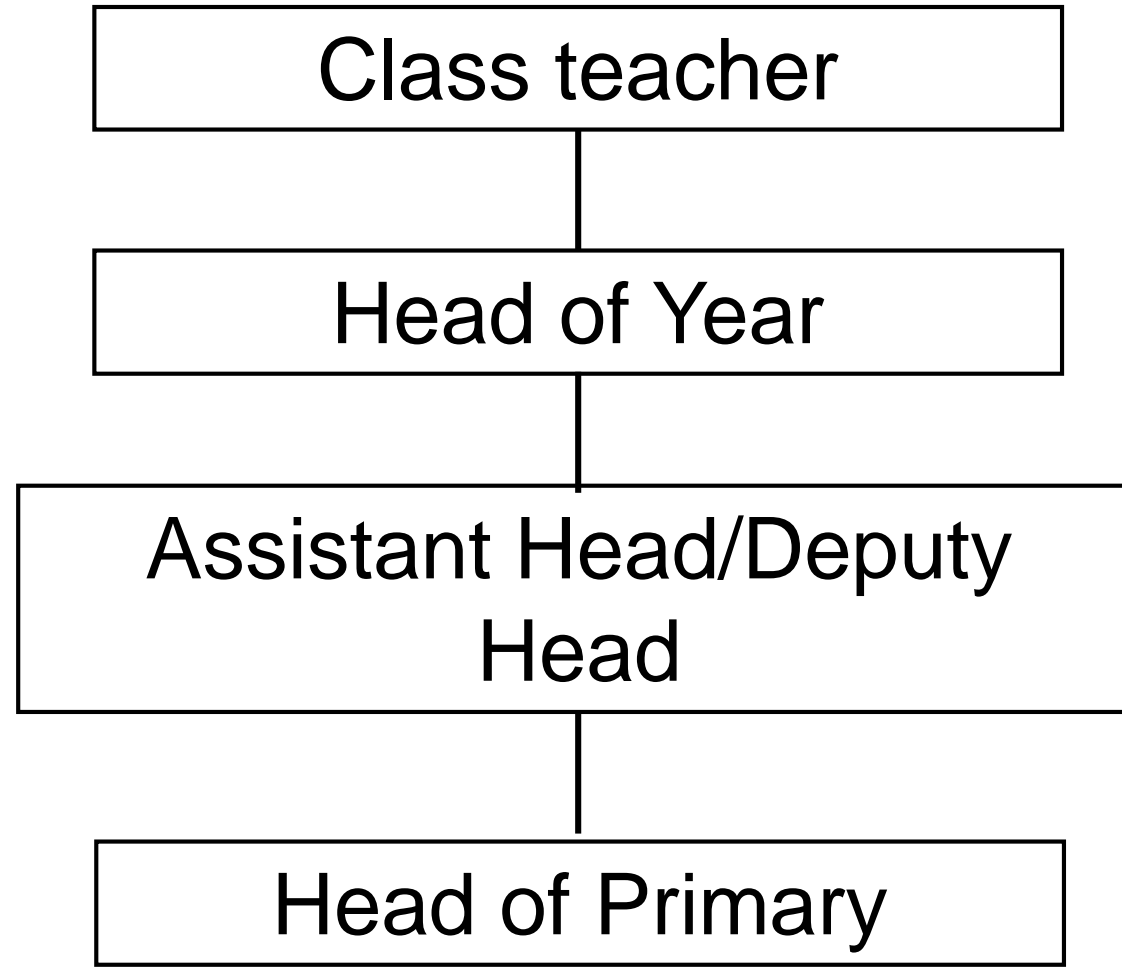
We do not give out telephone numbers and staff are advised not to engage in WhatsApp groups, this includes with the class reps. You can email teachers in the same way.

Teachers respond within 48 hours max 24 hours ideally. No emails will be sent on weekends or after 3pm.



Park House  
English School

# Communication



Park House  
English School

Communication

Social media platforms at Park House:

Facebook

Twitter

Instagram



Park House  
English School



---

Park House  
English School

# Questions?