



Park House
English School

Meet and Greet September 2020

Year 2P

Mr Bakewell and Mrs Suzanne



Park House
English School

Blended Learning

Park House is offering a blended learning approach – this means the children attend face-to-face days in school (at the moment this is one in every three days) and the other days they complete work online.

This is always subject to change. We want the children in school face-to-face as much as many of you do, but we want to keep everyone safe and have to stick to ministry guidelines.

You will have seen we can now offer only online. If parents wish to do so, you need to refer to the email sent by Mr Smith- we would always still advocate for your children to attend face-to-face as this is always the best approach to teaching.



Park House
English School

Blended Learning

Our approach to the blended learning will be consistent with that of other year groups.

We will be working hard to ensure that we cover the objectives from the Year 2 curriculum in order for the children to have the best chance of meeting the curriculum expectations by the end of the academic year.

- **This will require you to work through the online work provided.**

The online work will support the Face-to-Face work for the cycle for English and IPC.

In Maths and Phonics, it will support the Face-to-Face work from the previous cycle.



Park House
English School

Completion and Submission of work

Online work is assigned by 8pm the night before day 1. The deadline for completion is 7pm on Day 3. We will aim to mark assignments up to 24 hours after the deadline.

Qatar History is added weekly on a Sunday and should be submitted by 7pm Tuesday (within the same week) - it will be marked by the Thursday of that week.

The online tasks that we are setting should take the children around 45 minutes to complete. Please **do not** let your child spend longer than 1 hour on any given task, as they would not be expected to do this in class.



Park House
English School

Marking and feedback

Children will receive feedback on most of their online work. This may be a simple acknowledgement that the work is completed. Sometimes, more detailed feedback will be given for your child to review their work.

Please be aware that any work sent to us late will not be marked.

Our school follows British National Curriculum, which is taught throughout the school. We study the subjects below:

- Maths
- English
- Phonics
- IPC
- Music
- IT
- PE
- Languages- Arabic/Spanish
- Islamic studies
- Qatar History



Park House
English School



Park House
English School

During face-to-face, pupils will receive:

- Maths
- English
- Phonics
- IPC
- Music
- IT
- PE- PSHE/light table workout (Yoga etc)

IPC Topics Covered this Year are:

- Brainwave
- The Circus Comes to Town
- A Day in the Life
- The Earth
- Who Am I?
- All Dressed Up
- Push Me, Pull You



Park House
English School

Reading:

- We will be reading with each child at least once a week during face-to-face sessions.
- At home, you will have access to Oxford Owl and Get Epic.
- One book will be assigned at the start of each cycle on Get Epic.



Park House
English School

Face-to-face days

7:40 – Go straight to class
- registration

8:00 – formal teaching begins

8:50 – break/snack time

9:15 – formal lessons

10:55 – break/snack time

11:20 – formal lessons continue

1:50 – Children collected from class

Pick up 1:50 **must** be prompt



Park House
English School

Online tasks will include:

- Maths
- English
- Phonics
- IPC
- Languages- LIVE lesson
- Islamic - LIVE lesson
- Qatar History (Provided by Specialist)
- Music- simple follow up activity no need to hand in assignments.
- PE- simple follow up activity no need to hand in assignments.



Park House
English School

Use of TEAMs:

- Children should submit all learning through TEAMs
- Children **should not** log in to any live sessions before the start of the given time.
- Children should not be communicating socially via TEAMs.
- Remind children of the agreement signed in the beginning of the year for use of TEAMs.



Park House
English School

If children are only doing Online learning, they follow group C.

On the 3rd day, they attend 'live input sessions' at given times throughout the day, set by the teachers.



Park House
English School

Reporting

Three reports per year (December/March/June)

Meet the Teacher evening (September)

Two parent evenings (October/January)



Park House
English School

Ensure that children have...

- 2 drinks in non-breakable containers (NO GLASS OR CANS)
- Sensible/healthy food should be provided
- Label all children's items

We have a NO NUT policy at school.
Please ensure all items are nut free,
including: cereal bars and Nutella.



Park House
English School

General School Reminders:

- No mobile phones
- No tablets
- No smart watches



Park House
English School

Communication

First point of contact is the class teacher through email:

firstname.lastname@parkhouseschool.com

info@parkhouseschool.com

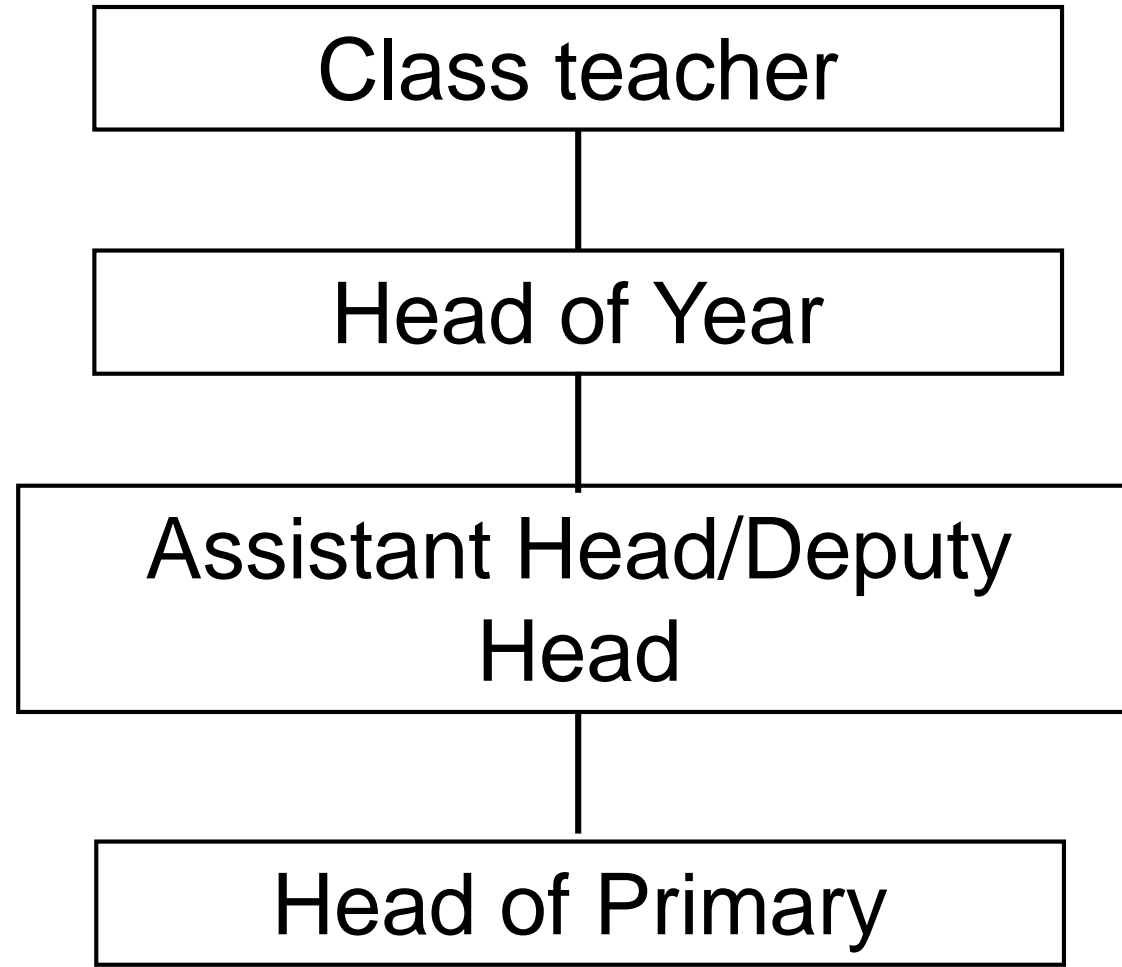
We do not give out telephone numbers and staff are advised not to engage in WhatsApp groups.

Teachers will aim to respond within 48 hours. No responses will be sent on weekends or after 3pm.



Park House
English School

Communication



Park House
English School

Communication

Social media platforms at Park House:

Facebook

Twitter

Instagram



Park House
English School



Park House
English School

Questions?